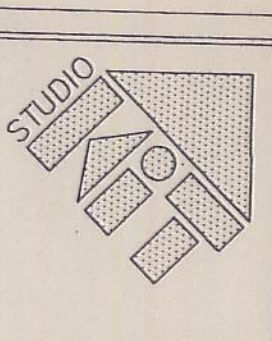
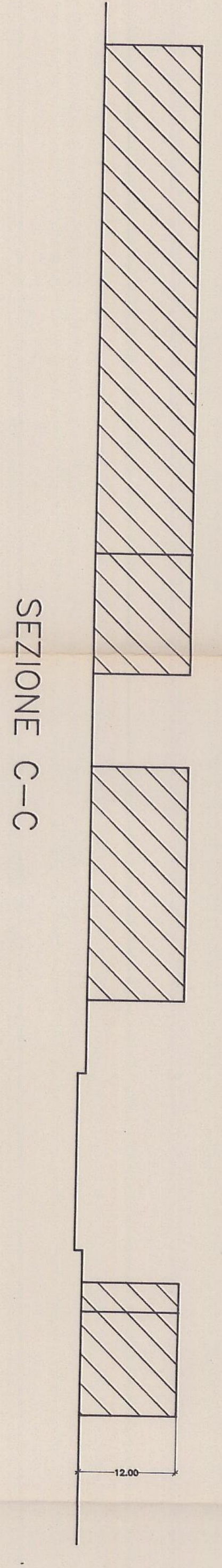
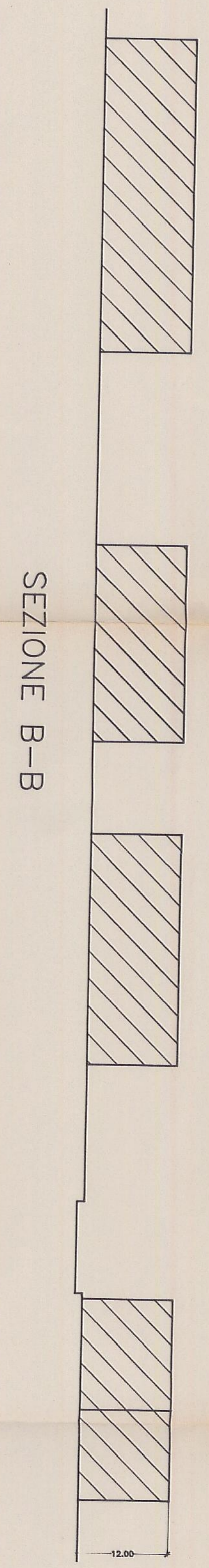
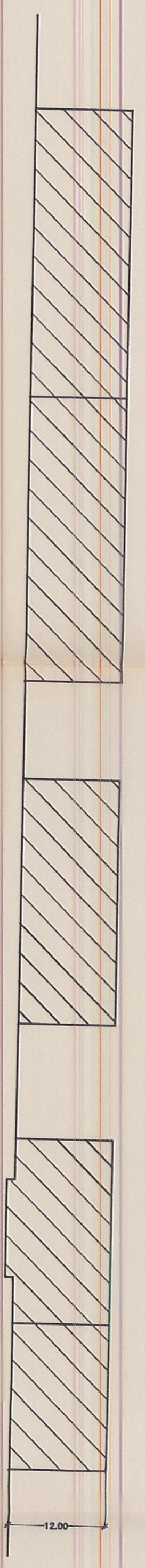


PLANIVOLUMETRICO



▨ ALTEZZA MASSIMA 12 m



Alghero via Garibaldi n. 12
 n. 114 dal 24.12.1998

Committente: Boschiero Monte Agnese s.r.l. e p.l.s.	
Scala: 1 : 500	Foglio: N. 5
in data: 23 Dicembre 1997	in plan:

COMUNE di ALGHERO

PIANO DI LOTTIZZAZIONE IN ZONA
 ARTIGIANALE IN REGIONE "MONTE AGNESE"

Elaborati:
 PLANIVOLUMETRICO

I Confindati
 Boschiero Monte Agnese s.r.l. e p.l.s.

I Progettisti
 ING. PIETRO G. CANU

