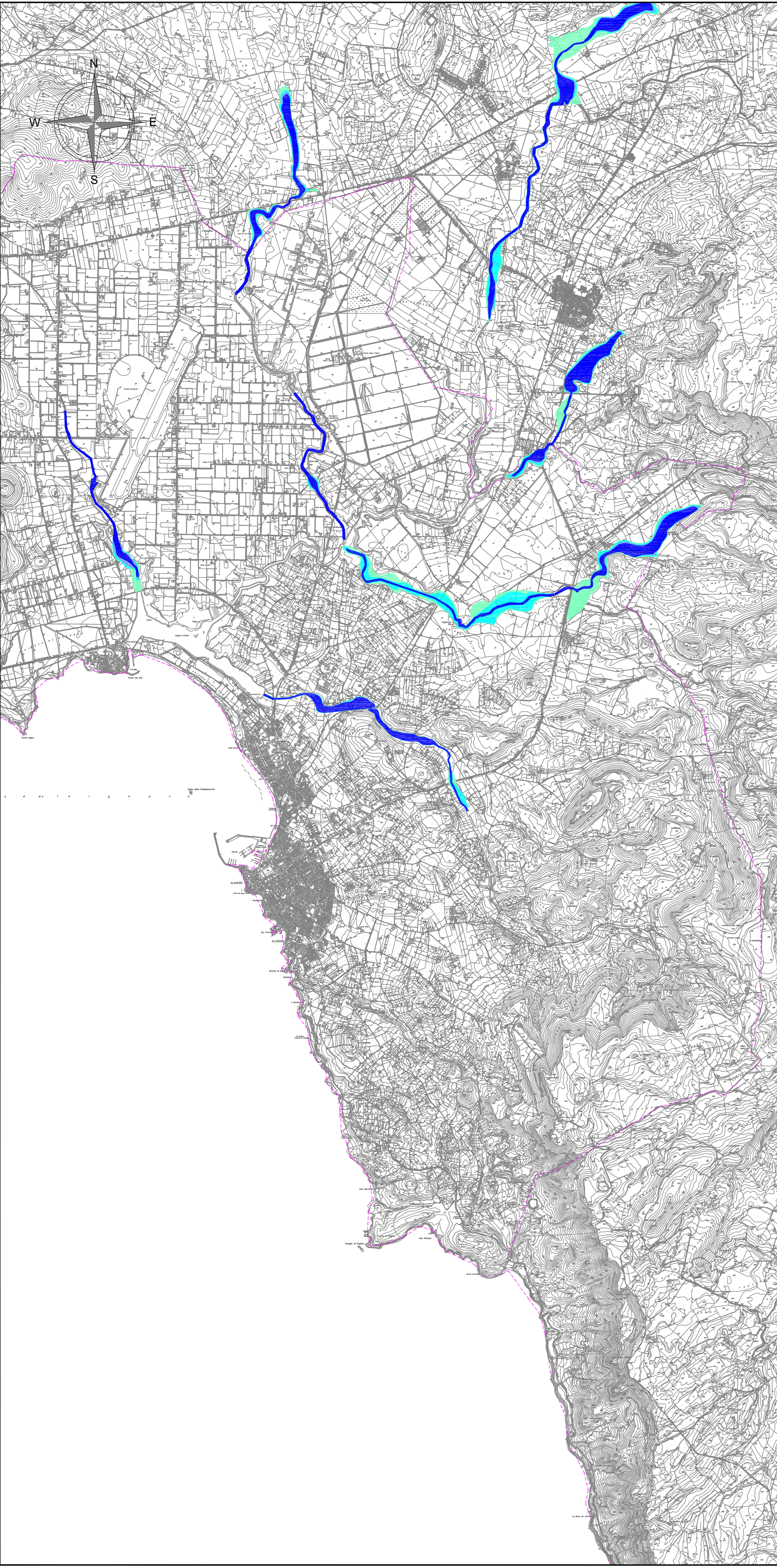
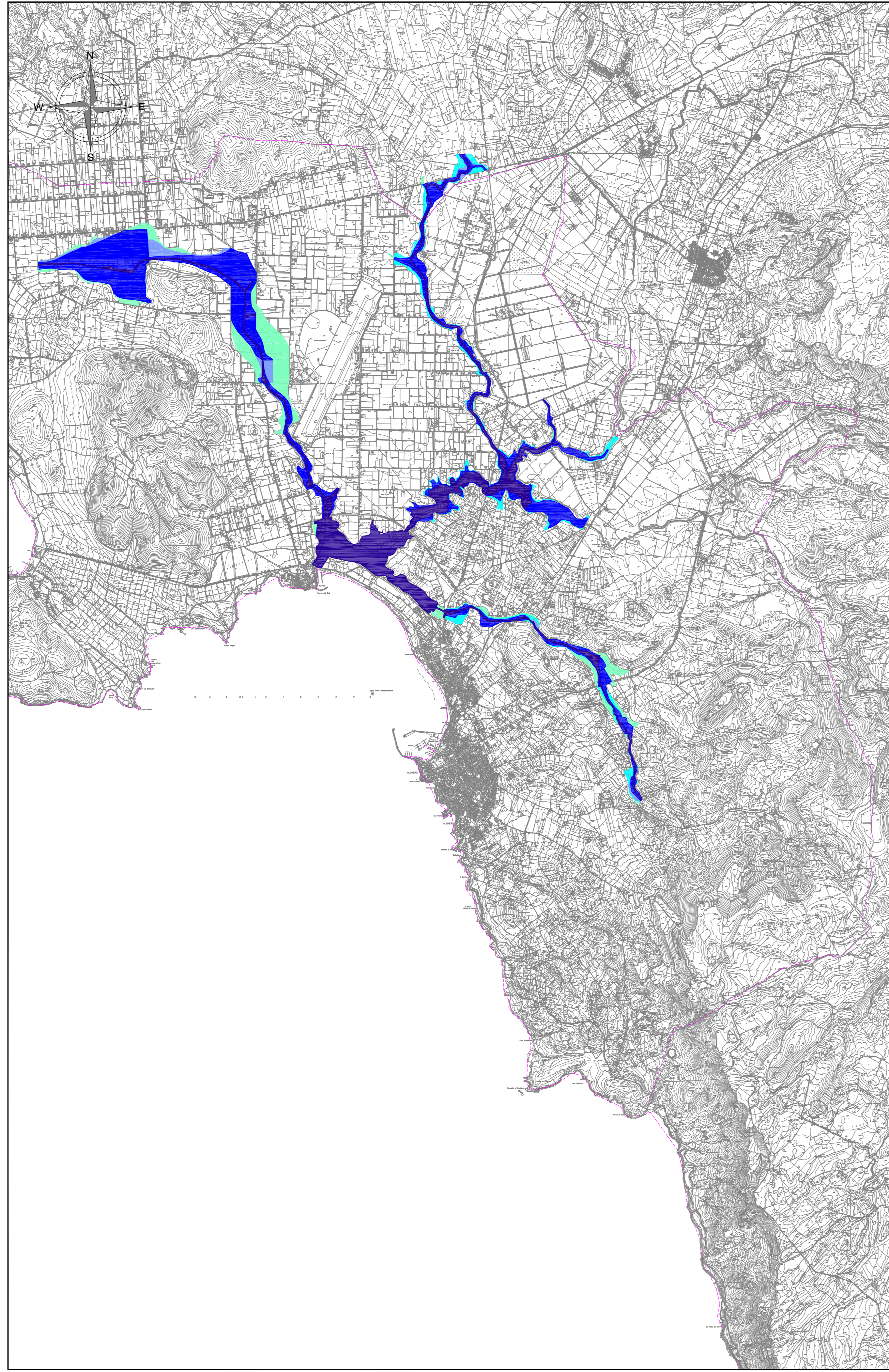


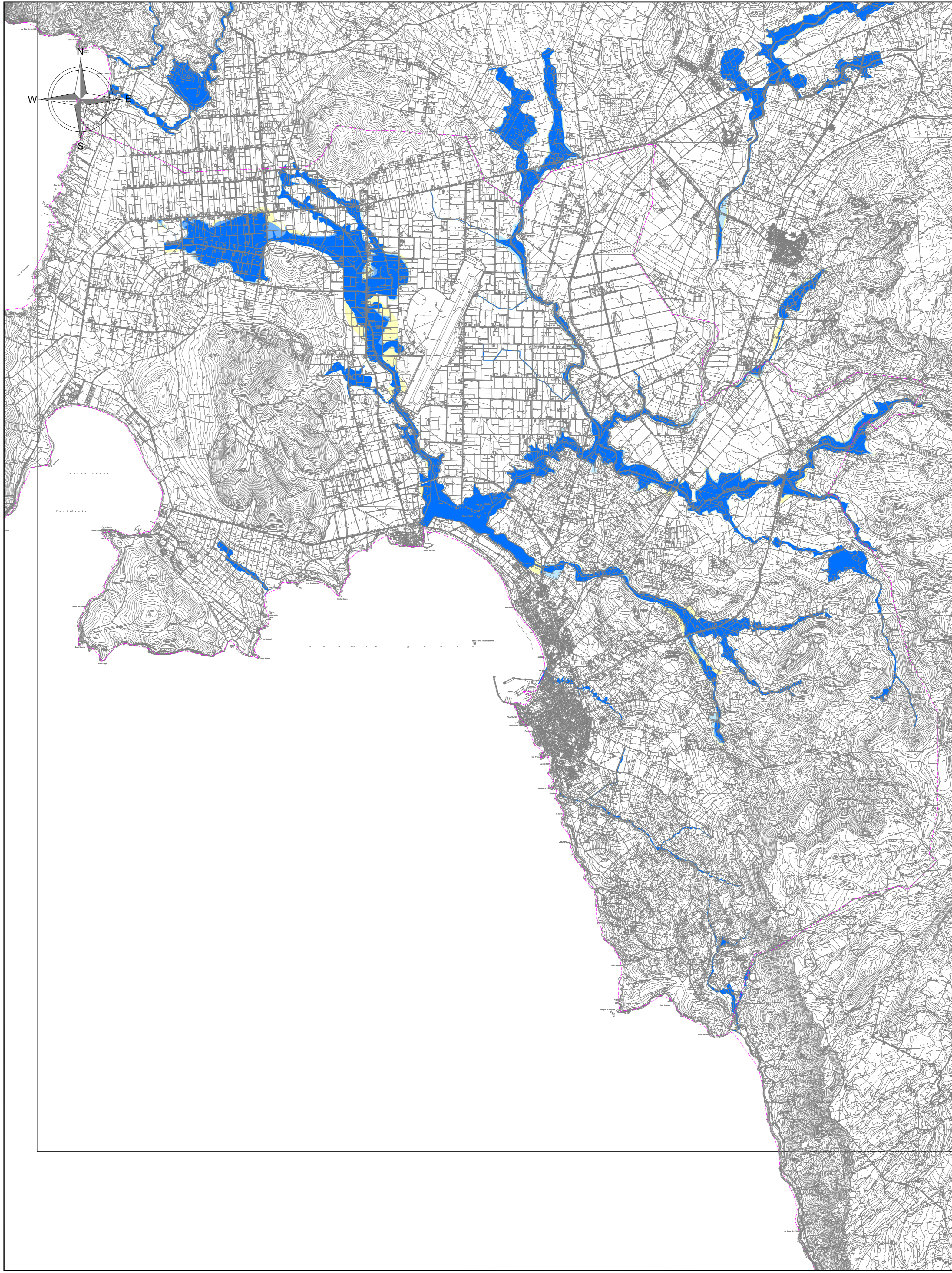
CARTA DELLA P.A.I. - SCALA 1:50.000



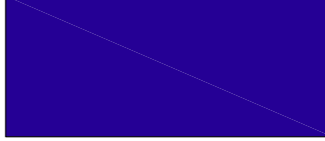
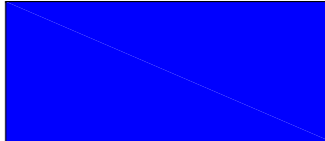

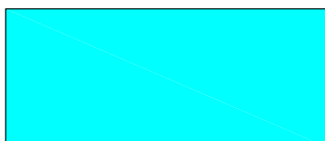


CARTA DELLA P.S.F.F. - SCALA 1:50.000



CARTA DELLA P.G.R.A. - SCALA 1:50.000



LEGENDA


-  PERICOLOSITA' IDRAULICA
Tr = 2 anni
-  HI4 - PERICOLOSITA' IDRAULICA
MOLTO ELEVATA
-  HI3 - PERICOLOSITA' IDRAULICA
ELEVATA
-  HI2 - PERICOLOSITA' IDRAULICA
MEDIA
-  HI1 - PERICOLOSITA' IDRAULICA
MODERATA
-  LIMITE TERRITORIALE COMUNALE


COMUNE DI ALGHERO
 PROVINCIA DI SASSARI
 

VARIANTE AL PAI, ex art. 37 comma 3 delle NTA del PAI
a seguito di Studio di Assetto idraulico e geologico
del territorio comunale

ELABORATO :

REVISIONI				TAVOLA	SCALA
n°	MODIFICA	DATA	CTRL		1:50.000
01	Integrazioni	Ottobre 2022	FC	2-A	CODICE
					NOTE

I Professionisti incaricati :

 Studio Associato
 4E-INGEGNERIA
 Dott. Ing. Fabio Cambula

Il Dirigente
 Ing. Michele Fois

Ufficio del Piano Urbanistico
 Arch. Angelo Manunta
 Geom. Franco Cherchi

L'Assessore all'Urbanistica
 Dott. Emiliano Piras

Il Sindaco:
 Dott. Mario Conoci